



COACH RESPONSIBILITIES



Shows the rugby values of **Teamwork, Respect, Enjoyment, Discipline and Sportspersonship (TREDs¹)**



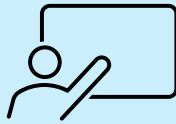
Fosters a safe, enjoyable, welcoming and inclusive environment



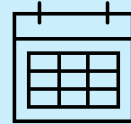
Remembers, players are here to have fun and develop



Motivates players through praise, positive feedback and constructive criticism



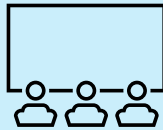
Teaches players the spirit and the laws of the game



Structures the season: coaching plans, training setup, match prep & rugby kit



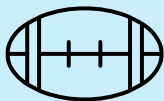
Follows RFU age grade regulations aligning to **Active, Purposeful, Enjoyable and Safe (APES²)**



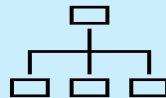
Reminds parents/guardians of their responsibilities



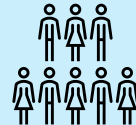
Safeguards player welfare, reporting any concerns to the Safeguarding Officer³



Equipment container / storage-room for coaches only. Use kit per age group and return tidily. Contact: **Facilities Manager⁴**



Manages coaching team: DBS checks⁵, roles & responsibilities, develops new volunteer coaches and team managers⁶



Requests players and parents/guardians recruit new players, aspiring to be 20 players per squad

¹ RFU Core Values of Rugby, "TREDs": <https://www.englandrugby.com/the-rfu/core-values>

² Video on APES: <https://www.youtube.com/watch?v=JF8iDf5nL18>

³ Email is safeguarding@hackneyrfc.co.uk

⁴ Email is facilitiesandequipment@hackneyrfc.co.uk

⁵ DBS checks within 4 weeks of starting and under close supervision until attained

⁶ Each age group aspires to have 3 coaches and 1 team manager